

ZERO.6

DAFA ProFoil™

DAFA ProFoil vapour barrier foil is a part of DAFA AirStop System and is a 100 % clean PE foil, built up in a multi-layer structure that makes it tear and scratch resistant, yet it is only 0.20 mm thick.



In alliance with  Insurance Solutions

Application

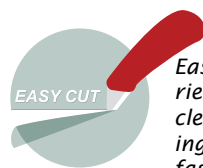
Used in ceiling, wall and floor structures. When you choose DAFA ProFoil together with the other products in the DAFA AirStop System range, you are guaranteed a tested and durable system adapted to interior building envelopes.

The material

With the multi-layer structure, a tear and scratch-resistant vapour barrier foil is ensured. The material can tolerate direct sunlight for a maximum of three months, and must not be exposed to direct contact with solvent-based wood preservatives.



Using DAFA ProFoil as a vapour barrier in building elements and structures susceptible to building moisture ensures effectiveness against mildew, mould and dry rot.



Easy-cut vapour barrier foil – ensures a clean cut without folding or fraying. Simple, fast and secure!

Technical specifications	
Length	50 m 25 m
Width(s)	2 m 3 m** 4 m
Thickness *	0.20 mm
Roll width	1 m
Vapour tightness, Sd value	≥ 140 m
Fire classification	F
Colour	Blue
DAFA no.	2 x 50 m - 620014522 3 x 25 m - 620022720 4 x 25 m - 620022019
EAN no.	2 x 50 m - 5705636344645 3 x 25 m - 5705636398624 4 x 25 m - 5705636394695

* Tol. + / - 10 %

** 3 m is a special order item.

Quality assurance

DAFA ProFoil is CE-marked according to EU standard PN-EN 13984:2006/A1:2007



Transport, delivery and storage

Rolled in a tube made from recycled cardboard, tightly packed in PE foil. Transported and stored horizontally on a Europallet.

Stored protected against the weather and direct sunlight. Must only be stacked to a height of two pallets.

DAFA ProFoil™

Project planning

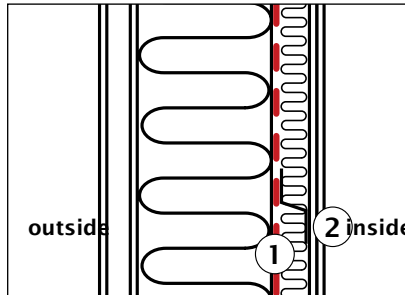
In the design of innovative and alternative structures, an assessment of the moisture conditions and structure must always be carried out in order to identify the correct vapour barrier solution.

Seal tightness

DAFA ProFoil belongs to the group of tight vapour barriers. With an Sd value of ≥ 140 m, the foil is tight.

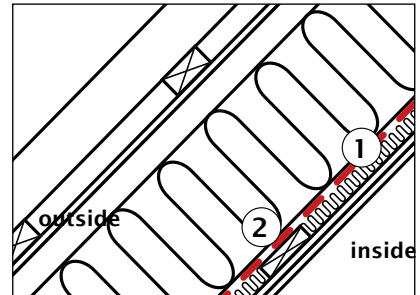
The Sd value's conversion factor to Z value is approximately 5.7.

When affixing ProFoil to absorbent surfaces, such as plaster, concrete or untreated wood, use **DAFA foil adhesive**.



General principle - Lightweight exterior steel wall.

1. Attach DAFA ProFoil to the surface of the steel using double-sided adhesive tape.
2. If necessary, Z profiles can be fitted with provision for electrical installations, etc.



General principle - Sloping wall in wooden roof structure.

1. Staple DAFA ProFoil to the wooden substrate.
2. If necessary, boarding can be installed with provision for electrical installations, etc.

Installation

The vapour barrier must be placed no more than one-third of the way inside the total thermal insulation layer, measured from the warmest side of the insulation layer.

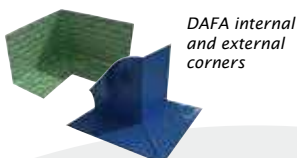
The substrate for the ceiling cladding can be installed on top of the vapour barrier with suitable dimensions to enable electrical installation etc. to be carried out without too many conduits.

Read more at www.dafa-as.com

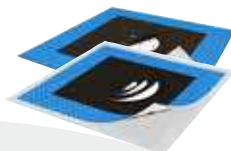


Mount the vapour barrier foil with overlaps and tape with DAFA vapour barrier tape.

A selection of products in DAFA AirStop System™



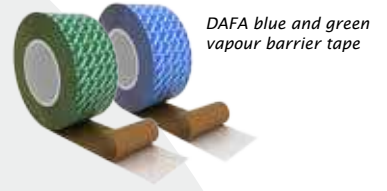
DAFA internal and external corners



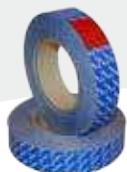
DAFA universal pipe and cable collar



DAFA PE plinth and sill foil



DAFA blue and green vapour barrier tape



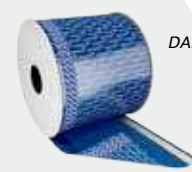
DAFA double-sided adhesive vapour barrier tape



DAFA foil adhesive



DAFA rafter shoe collar



DAFA PE lining foil

Use the complete DAFA AirStop System to ensure the tightness of critical conduits and building element transitions. See also www.dafa-as.com